

How To: Access kvm.volico.com while using IE mode in Microsoft Edge

At Volico, customers can purchase access to our out-of-band KVM (Keyboard-Video-Mouse) system. This provides customers with full access to their computer's local console over the internet, as though they are sitting at the screen with a keyboard and mouse connected.


Below is an overview of how to use and access the system.

Step 1: Enabling IE mode in Microsoft Edge

On June 15th, 2022, Microsoft is ending support for Internet Explorer, so you will need to enable IE mode in Microsoft Edge on Windows OS to access the system.

1. Launch Microsoft Edge
2. Check Edge for updates. Ensure that you are running the latest version. <edge://settings/help>

About

 **Microsoft Edge**
Version 102.0.1245.30 (Official build) (64-bit)

✓ Microsoft Edge is up to date.

Download Updates over metered connections

Automatically download updates over metered networks (for example, cellular network) and apply them on browser restart. Charges may apply.



This browser is made possible by the [Chromium](#) open source project and other [open source software](#).

3. Navigate to <edge://settings/defaultBrowser>. Set "Allow sites to be reloaded in Internet Explorer mode" to allow, and restart your browser.

Default browser

Microsoft Edge is your default browser

Make default

Internet Explorer compatibility

Let Internet Explorer open sites in Microsoft Edge ⓘ

Incompatible sites only ▾

When browsing in Internet Explorer you can choose to automatically open sites in Microsoft Edge

Allow sites to be reloaded in Internet Explorer mode ⓘ

Allow ▾

When browsing in Microsoft Edge, if a site requires Internet Explorer for compatibility, you can choose to reload it in Internet Explorer mode

For this setting change to take effect, restart your browser

Restart

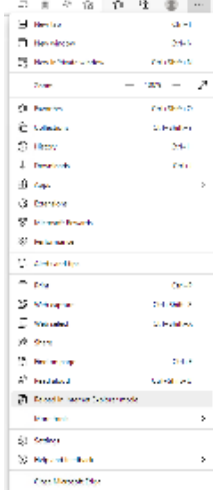
Internet Explorer mode pages

These pages will open in Internet Explorer mode for 30 days from the date you add the page. No pages have been added to the Internet Explorer mode list yet.

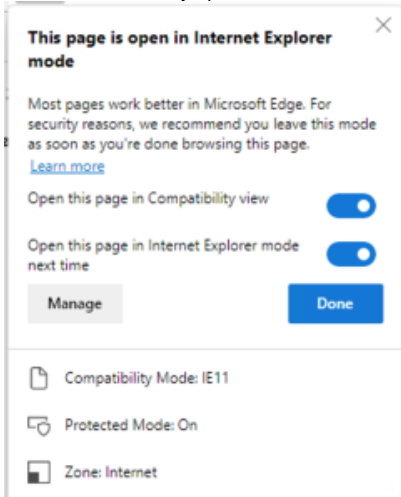
Add

4. When the browser relaunches, navigate to <https://kvm.volico.com>.
5. You'll see that the page shows nothing but a blank white field, as pictured.

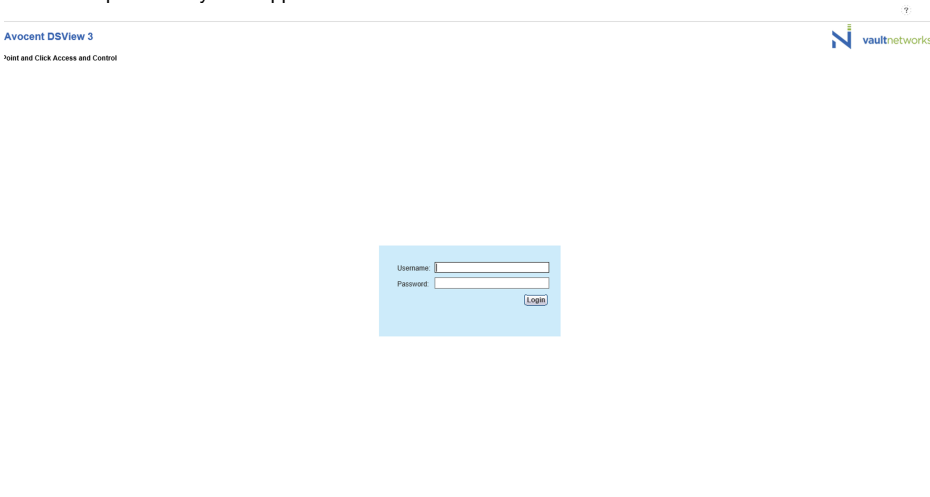
6. In the top right of the browser, click the button with the three dots; you'll see a dropdown of other options, and at the bottom one that says "Reload in Internet Explorer mode". Click it.



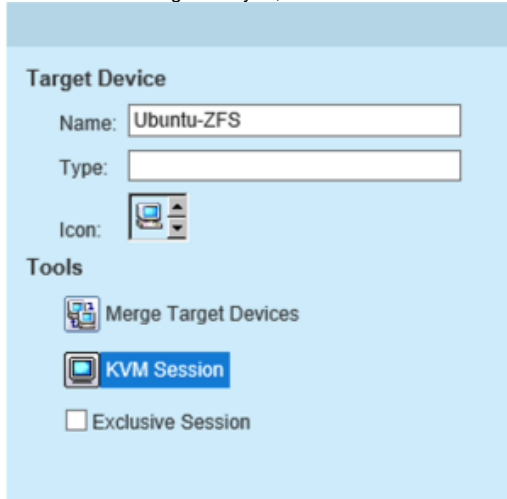
7. You'll now see the page with a blue Internet Explorer logo to the left of the address. Click on it and you'll see some additional options.
8. Enable the option "Open this page in compatibility view". You can also enable "Open this page in Internet Explorer mode next time" so that the site will automatically open in IE mode.



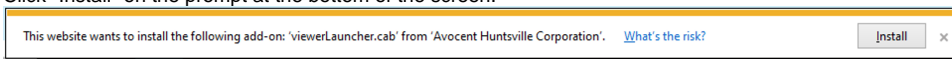
9. Reload the page. <YOU MAY NEED TO COPY PASTE THE LINK AND RELOAD AGAIN> Now you can see the login field and sign in with the credentials provided by our support team.



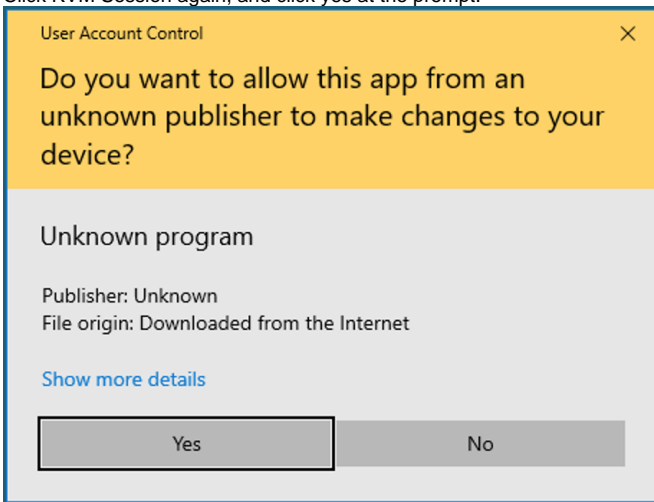
10. Select the unit assigned to you, and click "KVM Session".



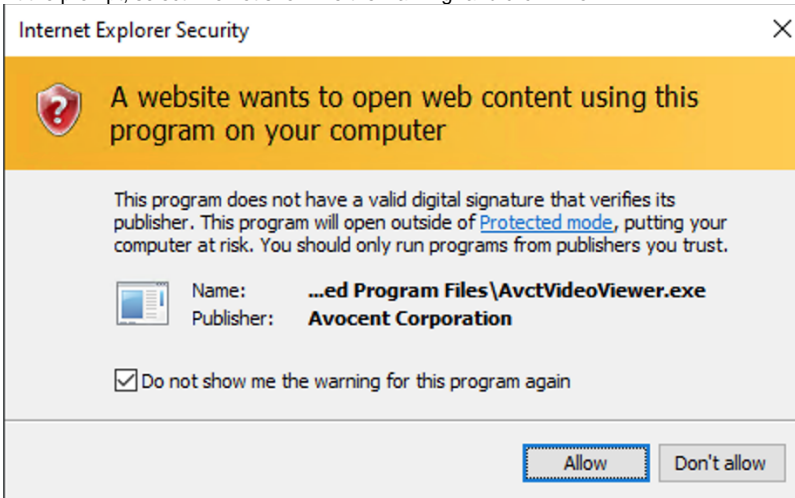
11. Click "Install" on the prompt at the bottom of the screen.



12. Click KVM Session again, and click yes at the prompt.



13. At the prompt, select "Do not show me the warning" and click "Allow".



14. Now you can access your console.